

Application Process



 **anabuki college group**

JAPANESE COURSES



Website

TAKAMATSU

学校法人 穴吹学園
専門 穴吹ビジネスカレッジ 日本語学科
Anabuki Business College Japanese Courses

〒760-0020 香川県高松市錦町1-11-1 TEL:087-823-7700
1-11-1 Nishiki Machi, Takamatsu-shi, Kagawa Prefecture 760-0020, Japan Tel:+81-87-823-7700
Email: 123@anabuki.ac.jp



FUKUYAMA

学校法人 穴吹学園
穴吹国際みらい専門学校 日本語学科
Anabuki Mirai International College Japanese Courses

〒720-0801 広島県福山市入船町2-2-3 TEL:084-973-3448
2-2-3 Irifune cho, Fukuyama-shi, Hiroshima Prefecture 720-0801, Japan Tel :+81-84-973-3448
Email: fukuyama-nihon-go@anabuki.ac.jp



TOKUSHIMA

学校法人 穴吹学園
専門 徳島穴吹カレッジ 日本語学科
Tokushima Anabuki College Japanese Courses

〒770-0852 徳島県徳島市徳島町2-20 TEL:088-653-3155
2-20 Tokushima cho, Tokushima-shi, Tokushima Prefecture 770-0852, Japan Tel: +81-88-653-3155
E-mail: t-nihon-go@anabuki.ac.jp



ANABUKI COLLEGE

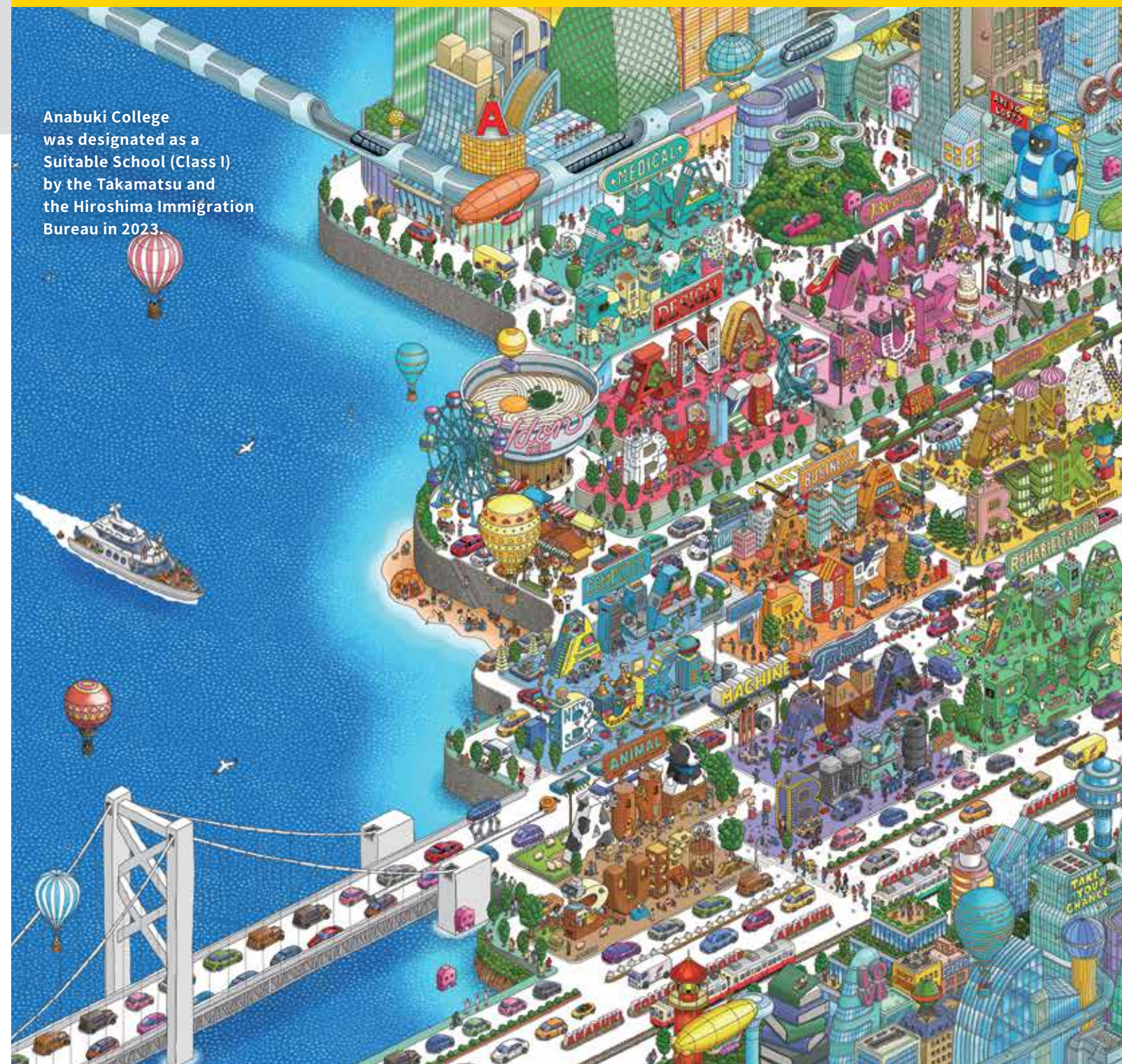
A “DREAM” REALIZED, STARTING WITH ANABUKI!

Since
1992

English

JAPANESE COURSES

Anabuki College was designated as a Suitable School (Class I) by the Takamatsu and the Hiroshima Immigration Bureau in 2023.



穴吹ビジネスカレッジ 日本語学科

TAKAMATSU

穴吹国際みらい専門学校 日本語学科

FUKUYAMA

徳島穴吹カレッジ 日本語学科

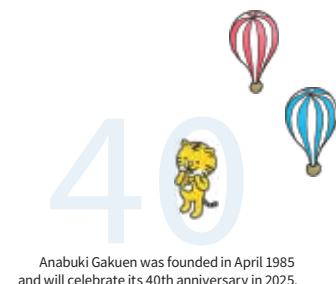
TOKUSHIMA

 **anabuki college group**

Anabuki College Group

Chugoku-Shikoku region's largest educational group

Japanese language education + vocational education • job support = consistent support



Anabuki Gakuen was founded in April 1985 and will celebrate its 40th anniversary in 2025.



Enrolled Students

4,799



Enrolled Foreign Students

663



Accumulated number of graduates

41,582

※As of May 2023

Anabuki College Group is a comprehensive educational group that develops junior colleges, vocational schools, high schools, and colleges in Chugoku-Shikoku region.

TAKAMATSU



Anabuki Business College Japanese Course

★ Japanese Course



Anabuki Computer College Anabuki Business College

International Building



Anabuki Computer College Anabuki Business College



Anabuki Design College Anabuki Beauty College



Anabuki Technical College



Anabuki Rehabilitation College



Anabuki Pâtissier & Welfare College



Anabuki Animal Health Techniques College



Anabuki Medical College



Setouchi Vocational College of Tourism



HIROSHIMA

FUKUYAMA

TAKAMATSU

TOKUSHIMA



Tokushima Anabuki College Japanese Course

★ Japanese Course

First school building



Tokushima Anabuki College Japanese Course

Second school building



Anabuki International Mirai College Japanese Course

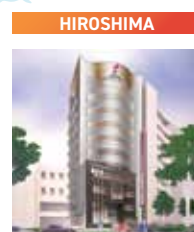
★ Japanese Course



Anabuki Business College



Anabuki Cooking & Pâtissier College



Anabuki Design College

Anabuki Campus Location

Takamatsu • Fukuyama • Tokushima Japanese Course

Safety

The location faces the warm Seto Inland Sea, and a safe place to live with few natural disasters such as tsunamis, earthquakes, and typhoons.

Security

The school has a comprehensive support system and is fully equipped with school facilities. It is located in the city, close to the station and supermarket.

Comfort

Many available part-time jobs, low cost of living, and comfortable living condition for studies.



TAKAMATSU



The Setouchi Triennale, held every three years, attracts many visitors from both Japan and abroad and has received high praise around the world. It is famous for its cheap udon noodles, with many location choices to eat at, making it also popular with foreign students. Over 20 islands surround the area, including the world-famous Naoshima and Shodoshima, and island hopping on holidays has become popular among foreign students.

FUKUYAMA



Fukuyama is an important economic, cultural, and transportation hub in the Chugoku-Shikoku region, with easy access to Tokyo, Osaka and other cities by bullet train. In addition, many companies, mainly manufacturing companies, are located here, so there are plenty of jobs. Commodities are lower than Tokyo, and the city has good public safety, making it easily livable.

TOKUSHIMA



Tokushima has long developed as a commercial city, with the Kii Suido in the east, green mountains in the south, and many rivers flowing in the city. Awa Odori, held in summer, is visited by tourists from all over the world. In recent years, it has also attracted worldwide attention as a city where anime culture has developed.

President's Message

Tadatsugu Anabuki, Anabuki College Group President

Thanks to the remarkable development of today's global networks, the distances between Japan and the rest of the international community are quickly shrinking. We are very pleased to be a part of this development, has welcomed students from 41 countries into our Japanese language program since its inception. Our college group is now the largest in mid-western Japan, and offers advanced training in computers, business, design, cosmetics, and many other professional fields. I sincerely wish that you will decide to learn with us, and then use your professional skills to contribute to our ever-expanding global community.



Anabuki Tuition and Fees

Educational Features



Placement
test every
3 months

Class with
20 students
or less

Higher Education
Admission Rate
100%
(March 2023)

Education that enables personal growth

- A clear curriculum set for each level to show what you will be able to do
- Master and balance proficiency in reading, writing, listening, and speaking
- Learn "natural Japanese" by focusing on the words used in real situations
- Learn about Japanese culture, social issues, and lifestyle habits
- A homeroom teacher for each class to focus on each student
- Providing detailed guidance and advice on daily studies and career paths

Courses and School Fees 20,000 yen selection fee is paid after passing the entrance interview, while the 70,000 yen admission fee is paid at the time of enrollment.
*School fees includes tuition, textbooks, event fees, and accident insurance fees.

Entrance Period	Course	Period	Total Lesson Hours	※School Fee
April	1-year	from April to the following year's March	800 hours / 36 weeks	705,000 yen
	2-year	from April to March of the year after next	1600 hours / 72 weeks	1,410,000 yen
October	1.5-year	from October to March of the year after next	1200 hours / 54 weeks	1,057,500 yen

Admission Requirements

- Applicants must have completed twelve years or more of formal education.(This includes those who will graduate by the time they begin the course).
- Applicants must have passed Level N5 or higher of the Japanese Language Pro-ciency Test or equivalent(Japanese class hours 150 hours)
- Applicants must be physically and mentally healthy, and willing to obey the laws of Japan and school rules.

Application guide



Timetable



- Classes: Monday to Friday 8:50AM to 12:50PM OR 1:20PM to 5:20PM ※Class hours vary depending on the campus
- Holidays: Saturdays, Sundays, national holidays, and school long break in spring, summer, and winter
- After enrollment, students will take a placement test and be divided into morning and afternoon classes based on their Japanese language ability.

NOTES

It is our general policy to not return any fee once received. However, if the Applicant is not granted a Certificate of Eligibility, or after receipt of a Certificate of Eligibility a visa is not granted by an overseas Japanese Embassy or Consulate, or a visa is not granted due to reasons such as natural disasters, disputes, wars, infectious diseases and others, the Entrance Fee and tuition will be refunded, but not the Application Fee. Should the applicant decline entrance after a Certificate of Eligibility has been granted, tuition will be refunded, but not the Application Fee and Entrance Fee. In this case, the original copies of the Certificate of Eligibility and Admission Permit must be returned to the school.

Daily Schedule For morning class

8:00 get up
8:50 school
13:00 lunch
14:00 homework•self-study
17:00 dinner
18:00 part-time job
22:30 come home
23:30 go to bed

Student Voice

The teachers at the school are kind and teach in easy-to-understand Japanese. My favorite is the pair conversation practice. Prices in Takamatsu are low and it is a place easy to live in. The city's specialty, Sanuki udon, is very delicious. My part-time is at an Izakaya four times a week. I sometimes make mistakes in Japanese, but I really enjoy talking to customers. My "senpai" (seniors) teach me everything carefully.



Vietnam

Anabuki Features

5 reasons to choose us

1

Japanese Language Education

- Homeroom Teacher System
- Educational content that promotes personal growth
- Level-based Educational Plan



2

In-school College Admission

- Tuition reduction and exemption system for students who proceed within college group
- A wide range of study areas
- Easy to join open campus



3

College Admissions Guidance

- Support for further education tailored to student's preference
- One-on-one college guidance
- Extensive exam preparation



4

Cultural Exchange Experience

- A wide variety of school events
- Join events hosted by prefectures and cities
- Exchange with Japanese high school and university students
- Multinational students are enrolled



5

Living support

- Multilingual support
- Part-time Job Support
- Accidents and health concerns support by the staff
- Safe and secure student dorms



Various Scholarship Programs

Various scholarship programs are available.



Scholarship name

Screening period

Amount

Duration

Kinue Tadatsugu Anabuki Educational Foundation

Before Admission

20,000 yen/month

1 year

Sunahara Children's Fund Study Scholarship

After Admission

30,000 yen/month

1 year

Education Ministry Foreign Student Study Grant

After Admission

43,000 yen/month

1 year

※The above are some of the scholarships available. As availability varies depending on the admission period and school, please contact us for further details.

After Japanese Courses

Process into realizing your dreams

Japanese Language Course

After Graduation

Internal College Admission

Vocational courses where one can study with Japanese students

Internal College Admission

Popular international departments for foreign students

Advancement to university/graduate school

Features of departments where one study with Japanese students

Internal Admission Benefits

- Tuition reduction and exemption system for internal admissions
- Depending on the Japanese language ability, an exemption from tuition fees up to 400,000 yen per year

As of March 2024

Departments Line-up

- Various Fields of Vocational Courses

Titles and degrees after graduation

2-year vocational school: Diploma
4-year vocational school: Diploma
Junior College: Associate Degree (Professional)

OPEN CAMPUS

- Find what you'd like to study
- You can take trial lessons in specialized departments

Various Specialized Courses (Excerpt)



Game Creator



Graphic Design



Architecture and Interior



Manga and illustration



Online video creator



Animal nursing, beauty care



Patisserie



Cooking



Beauty Care



Tourism

Student Voice

My dream is to become a pastry chef. I passed the JLPT N1, and thanks to Anabuki College's incentives and the internal admission benefits for foreign students, my school fee was reduced by 960,000 yen over two years. While I was a student, I joined the open campus and trial class of the patisserie department.



Taiwan Patisserie Department

Student Voice

My dream is to open a travel agency. The Seto Inland Sea is a quiet place that heals the soul. There are many sunny days, the cost of living is low, and the people are kind, so it's a very comfortable place to live. Anabuki College also offers internal admission benefits and tuition fee reductions. All the teachers are kind, the lessons are well-rounded, and I was able to pass the N1 level without any problems.



China Tourism Promotion Department

Popular Courses for International Students

Foreign Students Well-Known Courses

Job Offer Rate

100%
(March 2023)

Benefits

- 5 times payment plan for First year's tuition
- Only foreign student class until graduation
- Japanese language classes are available after admission



International IT Engineer Course

Aiming to be an IT or Electrical Engineer in Japan!

Class Video



Student Voice



The school also offers programming, CAD, and Japanese classes. I got a technical job in April this year through a part-time job introduced to me by my school, and I'm so happy to be able to make my dream come true.



International Business Course

Aiming for a job in Japan with business skills in management and marketing!

Class Video



Student Voice



There are many beneficial qualifications, classes on etiquette, and others that are advantageous for employment. While still a student, you can participate in career fairs for foreign students and learn about the company. There is sense of security when applying for a job.



International Hotel Business Course

Specialized department for international students to work in Japanese hotels and companies!

Class Video



Student Voice



I have classes in business etiquette, hotel practice, and front desk practice. I am currently studying to pass the N1 level of the JLPT. My dream for the future is to get a job at a five-star hotel in Japan.



International Business Basic Course

Review Japanese and learn the basics of business and aim for higher education!

Class Video



Japanese Basics



Basic Computer Practice



Caregiver Course

Learn safe and secure nursing skills to become an emotionally supporting care worker!

Class Video



Student Voice



I love talking to the elderly. I also took classes on communication skills, mind, and body which helped me understand my own body and illnesses. My dream is to be licensed care worker and continue working in the care industry.



Automobile Servicing Course (3-year)

Aiming to work in Japan with a high national qualification passing rate!

Class Video



Student Voice



With many benefits on internal admission, the tuition fees have become cheaper. The teachers teach in simple Japanese, so I can study with confidence. I have secured employment and am very happy to realize my dream.

Job support measures

- Job hunting support specialized for foreign students!
- Study Japanese corporate etiquette, business documents, emails, and telephone correspondence
- Support for company visits and etiquette training is provided for good impression
- Guidance on resume writing, how to apply, and document screening process
- Preparation for employment exams and guidance from job offer to hiring
- Guidance on changing status of residence and documents required for visa application
- [Kagawa Foreign Student Support Association] job seminars and job fairs



Anabuki Support

Anabuki College offers various types of support to international students to help them live with security. Please feel free to consult about life, studies, part-time work, and others in Japan.



Fulfilling life support

1

Airport pickup



- On the day of arrival, you will be picked up at the airport
- Escort everyone to the dorm
- Feel at ease even if it's your first time abroad

2

Part-time Job



- Part-time jobs are introduced based on one's Japanese level
- Variety of part-time job information from companies
- Guidance on resume writing and interview

3

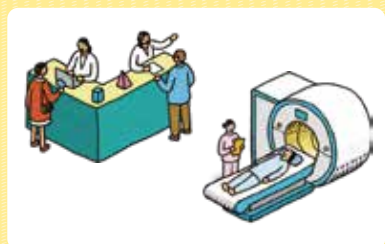
Police Support



- Upon admission, police conducts a talk to guide students on daily life and traffic safety
- Conduct evacuation drills with the police cooperation
- Secure and safety living

4

Accidents・Illnesses



- Multilingual questionnaires are available
- In case of accident, we assist with insurance companies processes
- Going to the hospital with the staff

5

Multilingual Support



- Vietnamese
- Korean
- English
- Chinese and others Available
- Nepalese
- Tagalog

6

Other Procedures



- Resident registration, health insurance, opening a bank account
- Residence status renewal

Anabuki Dormitory



Cost(for 1 person) ※Move-in fees include the deposit, dormitory cleaning fee, insurance fee, and three months' rent. Maintenance fees, management fees, and utility fees are to be paid separately.

TAKAMATSU

Located in the city center, there are many places to shop and eat, making it a convenient. There are a wide variety of room types, so you can live with security.

Single



2~3 Occupants



Room type	monthly rent	moving-in fees
Single	33,000yen	210,000yen ※
2~3 Occupants	13,500yen~20,000yen	125,000yen ※

FUKUYAMA

It takes about 15 minutes to get to school by bicycle. It is very conveniently located, just a 5-minute bike ride from supermarkets, convenience stores, 100-yen shops, and home improvement stores. Wi-Fi is also available, making living easy.

2~3 Occupants



Room type	monthly rent	moving-in fees
2~3 Occupants	20,000yen~22,000yen	105,000yen ※

TOKUSHIMA

It takes 15 to 20 minutes by bicycle to get to school. Wi-Fi is available, and each student has their own room. There are convenience stores, supermarkets, Aeon Malls, and others nearby, so it's very convenient. There is also a bus stop nearby, so you don't have to worry about rainy days.

2~3 Occupants



Room type	monthly rent	moving-in fees
2~3 Occupants	20,000yen~22,000yen	129,000yen~150,000yen ※

1-month Income & Expenses (sample)

Part-time Job Salary	+110,000yen
Rent	-18,000yen
Utilities	-5,000yen
Food&Drink	-15,000yen
Phone Bill	-2,000yen
Others	-3,000yen
Remaining	+67,000yen

Student Voice

The climate is warm and there are many sunny days. The school is located in the city center, and there are shopping streets, supermarkets, convenience stores, and second-hand stores nearby. I get around by bicycle so there are no transportation costs, and my part-time job is nearby, so it's very convenient. Rent and prices are very cheap, so I can save money from my part-time job and pay for part of my living expenses and tuition fees myself. There is also the sea near the school, so I often go there with friends on my days off. Having friends from different countries make every day a lot of fun.



Indonesia

You can live here way cheaper than in Tokyo or Osaka